



## ***Wood or Coal Hot Water Furnaces***



*Model 35EKB Wood or Coal Hot Water Furnace*

***The Ultimate in Solid Fuel Heating***

***Manufactured exclusively in Chippewa Falls, WI USA***

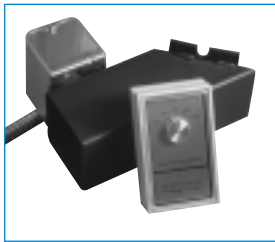
© 2007 RJM Manufacturing, Inc.

For over 30 years, **ENERGY KING™** has maintained a commitment to providing quality solid-fuel heating appliances. Our experienced engineers know what it takes to build solid, long lasting central heating equipment. We use the latest technology to design and build our products, with particular attention to safety, efficiency, reliability and ease of use. Our ultimate goal is to combine these aspects to guarantee our customers a solid product built for a lifetime of top performance.

## Energy King Hot Water Furnaces Feature:

**Two Draft Options:** Energy King Wood/Coal Hot Water Furnaces offer two thermostatically-controlled draft options: Automatic or Forced Air Draft.

**Automatic Draft:** When your home cools, the wall thermostat opens a damper in the automatic draft tube allowing your chimney's natural draft to pull combustion air into the fire chamber of your hot water furnace. Once your home is at the desired temperature, Energy King's wall thermostat closes the automatic draft tube damper.



**Forced Air Draft:** When your home cools, the wall thermostat turns on the forced air draft blower to force combustion air into the fire chamber of your hot water furnace. Energy King's wall thermostat turns off the forced air draft blower once your home is at the desired temperature.



**Cast Grates:** Energy King Wood/Coal Hot Water Furnaces come standard with stationary wood grates.

Energy King's optional "5-bar shaker grate system" has been engineered to allow for the precise amount of combustion air under the fuel bed. The shaker system is activated by an externally mounted shaker arm, eliminating the need to open the ash door to shake the grates.



**Legs:** All Energy King hot water furnaces are raised off the floor on legs. This eliminates the accumulation of moisture between the floor and the bottom of the unit that may cause damage to the metal parts of the hot water furnace.

**Durable Construction:** Energy King hot water furnaces are constructed of high grade plate steel and welded using the "submerged arc" welding process, ensuring the best in durability and longevity. Reinforcement rods have been added to the 1/4" plate steel water jacket for additional strength. All Energy King hot water furnaces use 2000 degree firebrick, and heavy cast iron grates and doors.

## Energy King Hot Water Furnaces

Model Number	45EKB	35EKB
H x W x D	54.5" x 24" x 43"	54.5" x 24" x 38"
Leg Height	4"	4"
Shipping Weight (approx.)	1,100 lbs	1,000 lbs
Heating Area (approx.) *	up to 4,000 sq. ft.	up to 2,500 sq. ft.
BTU Capacity (approx.)	160,000	140,000
Water Capacity (approx.)	45 gallon	35 gallon
1/4" Steel Firebox (H x W x D)	30" x 17" x 35"	30" x 17" x 30"
Firebox Volume	10 cu. ft.	8.5 cu. ft.
Flue Size	8"	8"
Flue Collar Height (top vent)	55.5"	55.5"
Flue Collar Height (rear vent, to center)	41"	41"
Log Length	32"	26"
Loading Door Size	13.5" x 15.5"	13.5" x 15.5"
Ash Door Size	7.25" x 11.5"	7.25" x 11.5"
Sliding Baffle	Standard	Standard
Insulated Cabinet	Standard	Standard
1/4" Steel Plate Water Jacket	Standard	Standard
Wall Thermostat	Standard	Standard
Draft Controls	Forced or Auto	Forced or Auto
Prewired Elec Components	Standard	Standard
Wood Grates	Standard	Standard
Shaker Grates	Optional	Optional
Copper Coil 4"	Optional	Optional
Cast Iron Hearth Plates (Front & Rear)	Standard	Standard
Removable Ash Pan	Standard	Standard
Waterjacketed Back	Standard	Standard
Warranty	6 Year Prorated	6 Year Prorated

Quality backed with a prorated SIX YEAR WARRANTY on firebox. Castings, electrical, gauges, relief valves and coils are backed by their manufacturers' warranty.

**All units require a Class "A" all-fuel chimney.  
Installation must conform to local and state building codes.  
Unit is not ASME approved.**

We are constantly improving and updating our products in order to provide the highest quality and value possible.

We reserve the right to make changes and improvements without notice.

\* The heating capacity specifications are provided as guidelines only and in no way guarantee the output or capacity of the units. The actual BTU output depends on the type of fuel being burned and its condition, the thermostat setting, the draft adjustments and the chimney that the unit is installed into.

**Dealer:**